



LUND
UNIVERSITY

Challenges facing Erasmus Mundus projects

Petter Pilesjö

PP Activities

- EM A1 JM - GEM
- EM A1 JD - GEODOC
- EM A2 – ACP
- EM A2 – Egypt
- EM A2 – Iran, Iraq, Yemen
- EM A2 – Gulf



Many projects – many challenges



Choose partners!



- Be sure they are ok!

Write application!



- Start early and be sure you have support!

Female applicants!



- Homepage + alumni + physical meetings in partner countries

Target group 3!



- Increase visibility and work e.g. with UNHCR

Selection!



- A1: 1 university organize, A2: Difficult, but receiving partner has to decide (n important)

Language!



- Difficult, has to be harmonized (strictest rule), but try to be flexible (interview?)

Visa and travel!



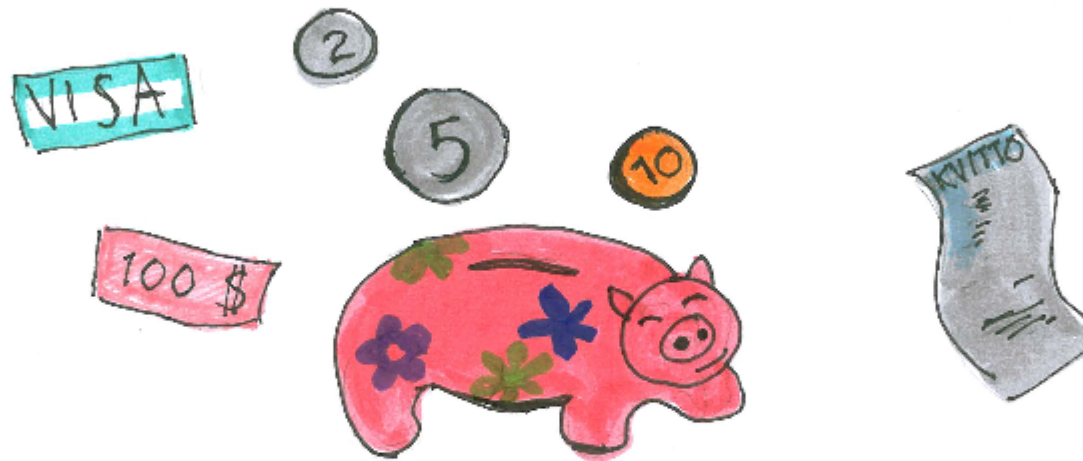
- Organize, be flexible and helpful

Quality/reputation!



- Choose good partners and be good!

Finance!



- Don't trust your partners 😊

Drop outs!



- Communicate before selection! Tell the truth!

Tuition fees!



- Robin Hood

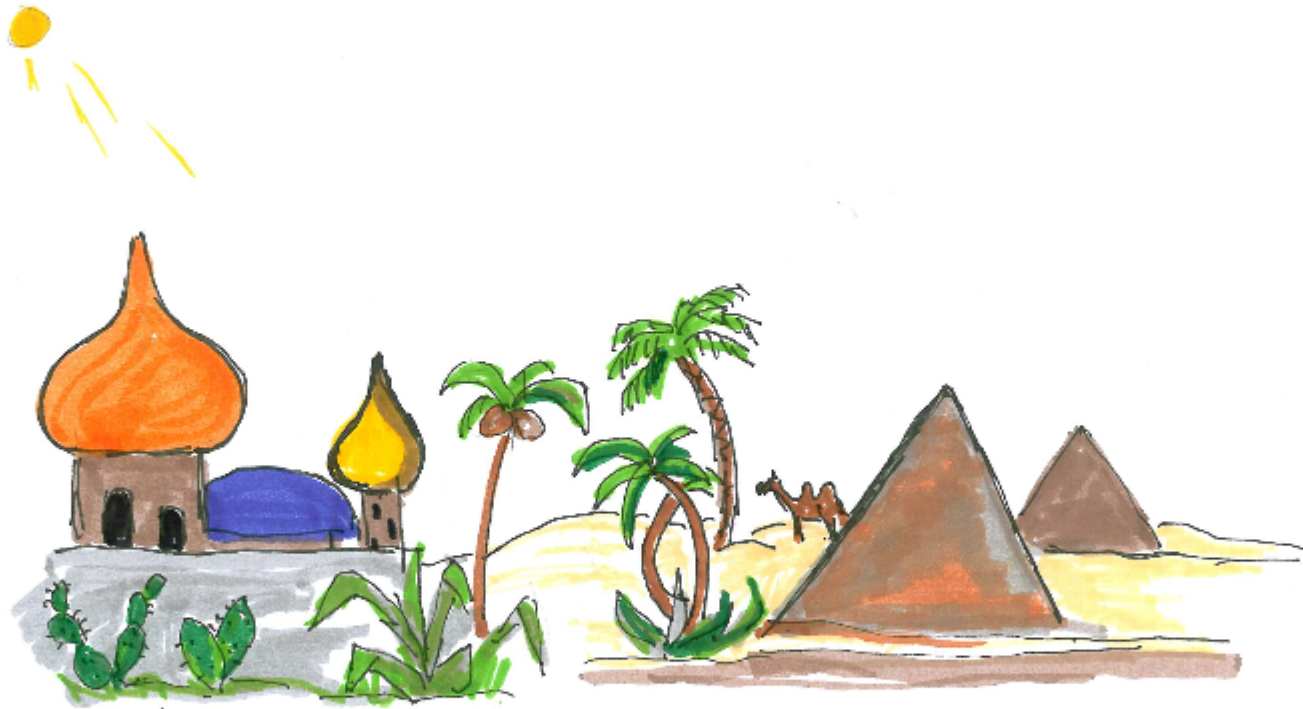


Links outside universities!



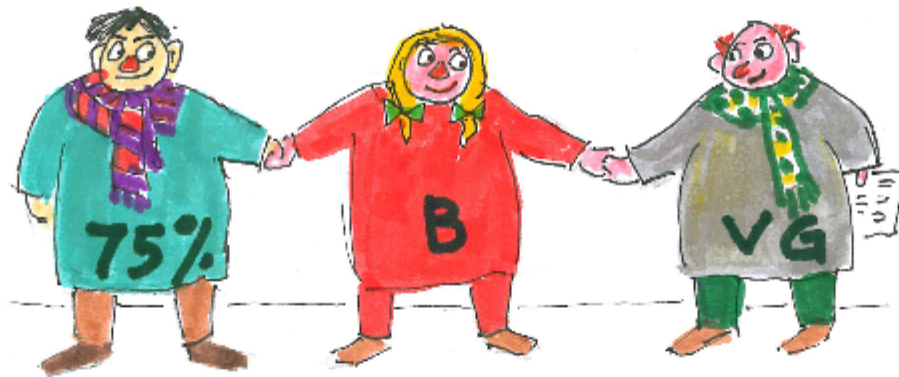
- Strategic Advisory Board (SAB), internships etc.

Links to “home countries”!



- Meetings > spinoffs > true cooperation

Grading system!



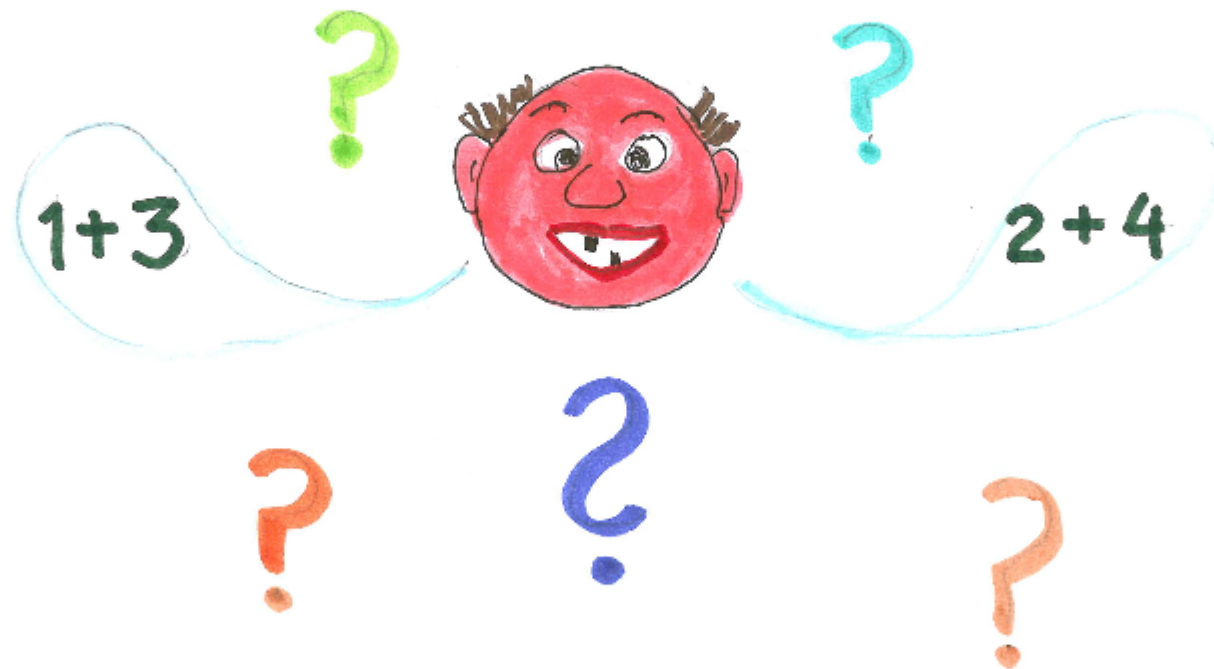
- Make conversion table, link to one common (ECTS grading?)



- Link to ECTS, but difficult!



MSc/PhD duration!



- Agree!!!

To be continued.....

